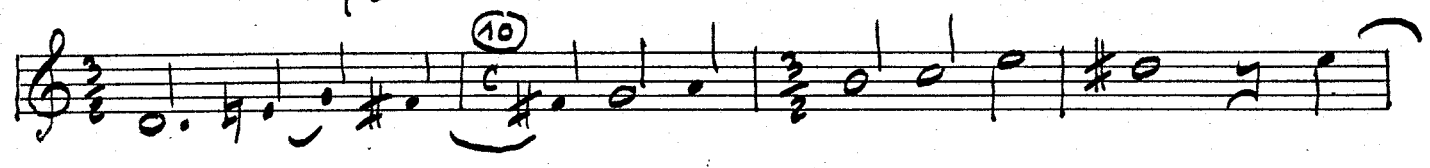
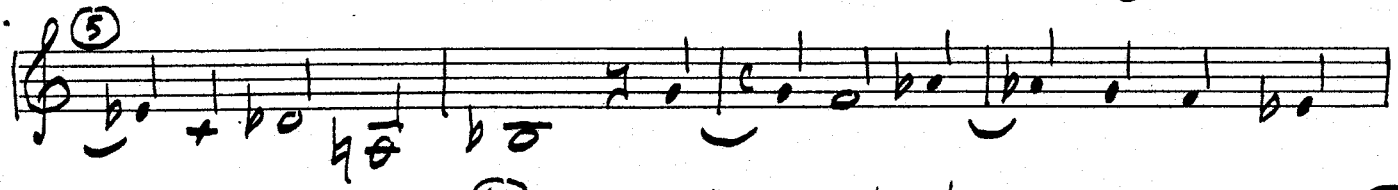
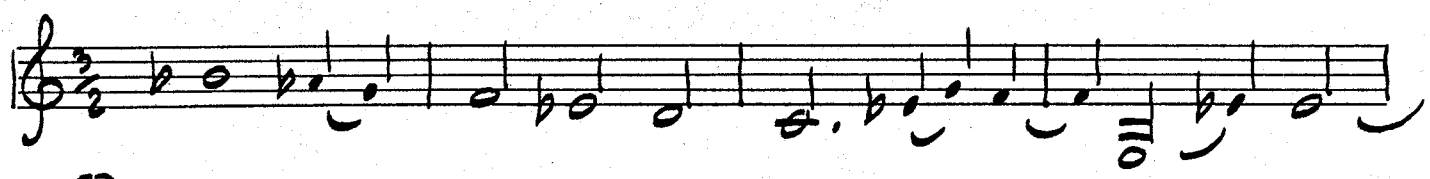
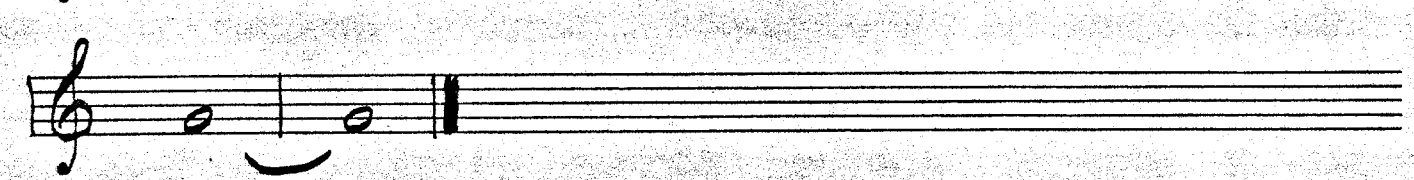
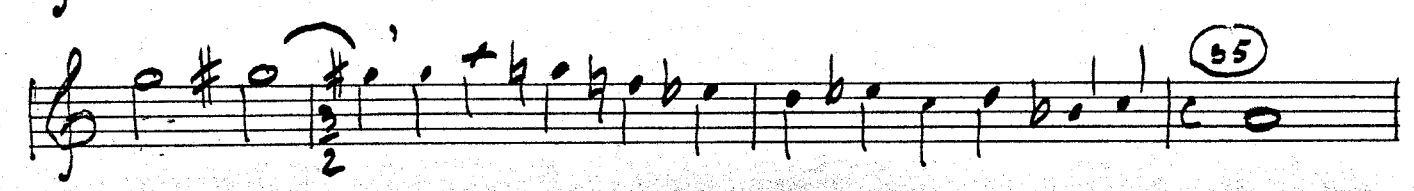
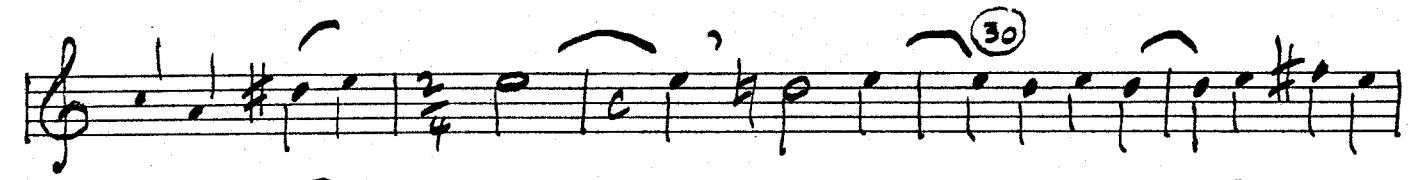
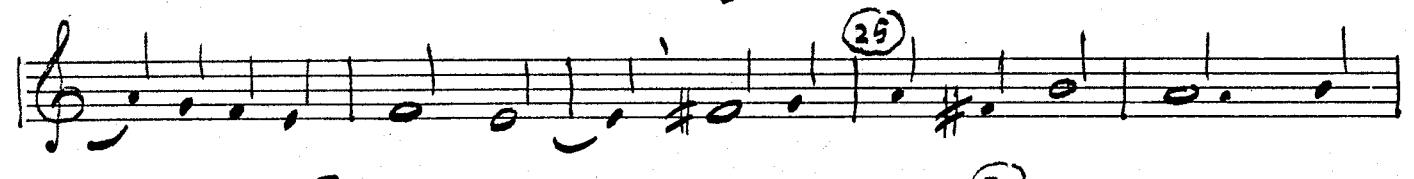
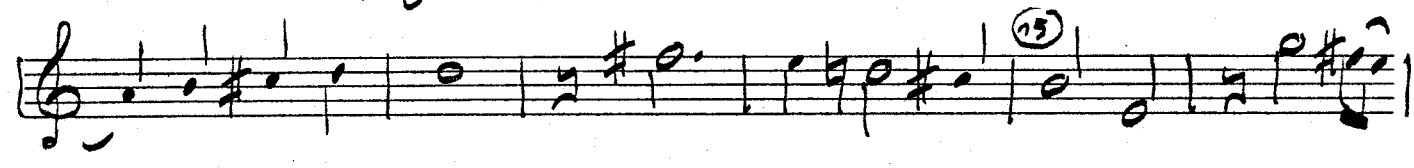
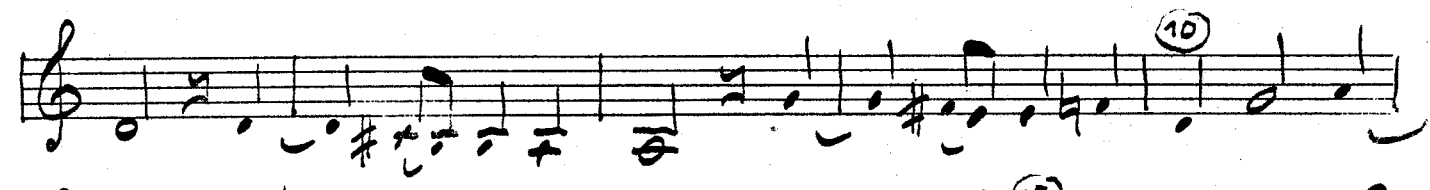
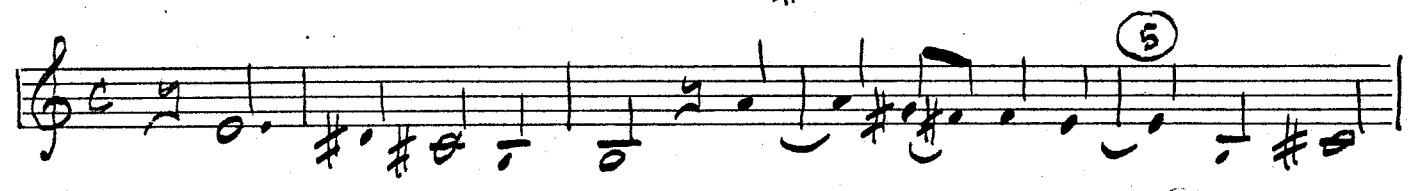


I



II



Handwritten musical notation on a single staff, starting with a treble clef and a 3/2 time signature. The notation includes various notes, rests, and accidentals. Circled numbers 5, 10, 15, 20, and 25 are placed above the staff to indicate measure numbers. The notation ends with a double bar line.

Four sets of empty musical staves, each consisting of five horizontal lines, provided for further notation.